

•
Super-fast standalone network scanner that's powerful and easy to use



Dedicated network scanner

The Canon imageFORMULA ScanFront 400 is the ultimate network scanner helping to streamline document workflows. The simple interface allows quick and easy scanning to email, network folders, FTP, USB memory, fax, or printers directly from the scanner's bright and responsive 10.1" (25.7 cm) TFT touchscreen – no additional hardware or software is required.

Ideal for every business

Its desk-friendly size, elegant design and quiet operation make it well-suited for both back office use and customer-facing counter tops in retail, banking, healthcare and the legal profession. Small businesses can benefit from documents being quickly digitalised and saved to a central database. A network of ScanFront 400 scanners can be integrated into existing infrastructure of large corporations allowing for decentralised scanning.

ScanFront 400

B&W
SPEED
45 ppm

COLOUR
SPEED
45 ppm

DAILY DUTY
CYCLE
6,000 scans/day

AUTOMATIC
DOCUMENT
FEEDER
60 sheets

POWERFUL DEDICATED NETWORK SCANNER



Boost productivity

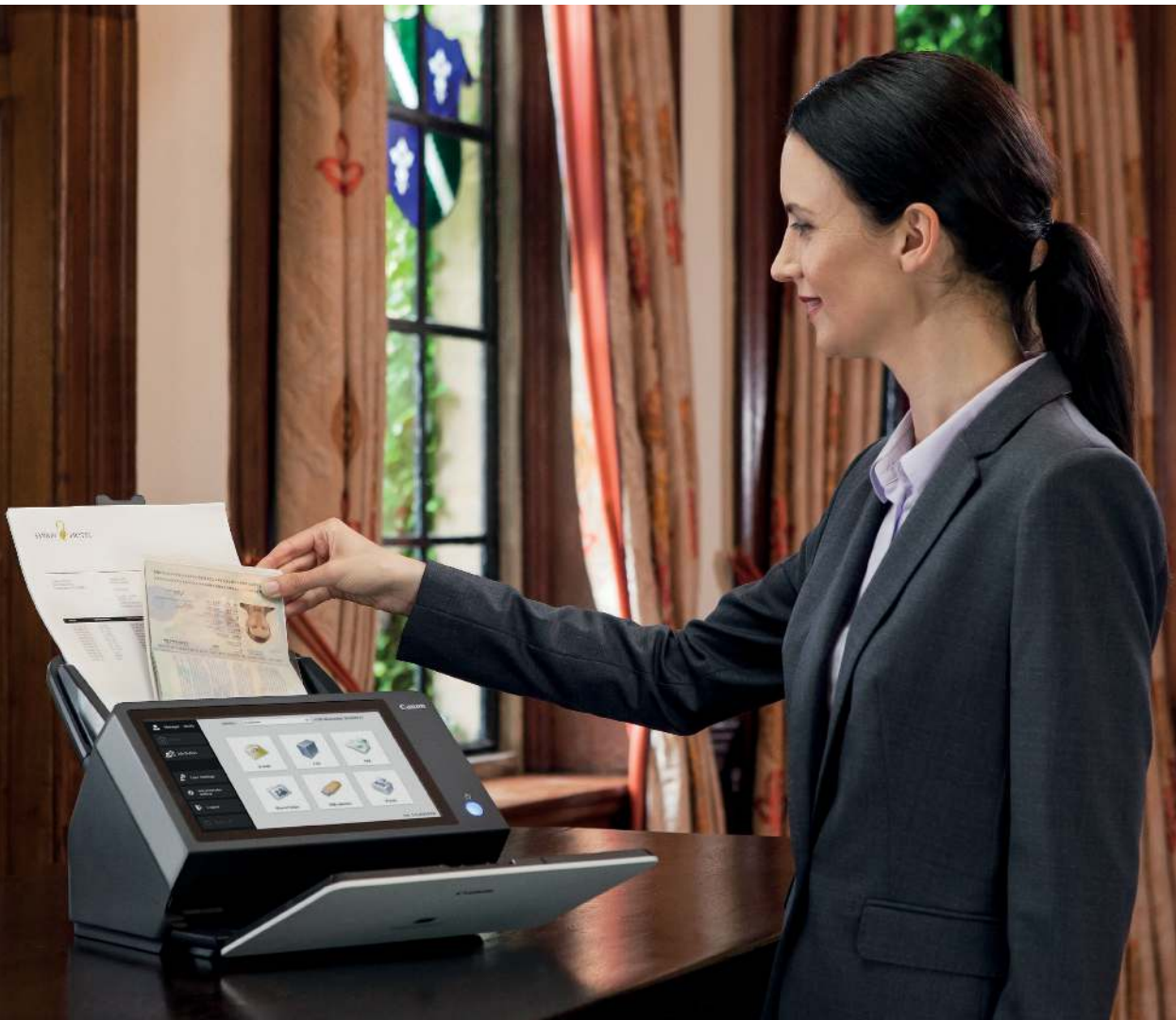
Scan more documents with high-speed scanning at 45 pages per minute, plus a large 60-sheet ADF. Canon's tried and tested document feeding mechanism and durable build quality, rated for up to 6,000 scans per day, ensure unparalleled reliability. Ultra-sonic sensors instantly detect double feeds, while the Double Feed Release (DFR) function enables easy scanning of envelopes and folded documents.

Wide range of media

Make light work of scanning all kinds of documents, from A4, A5, and business cards to long document rolls (up to 3 metres) and even plastic cards, passports and A3 documents (in folio mode) – ideal for HR departments, hotels and banks. The device automatically detects paper size and adjusts as required.

Customisation and integration

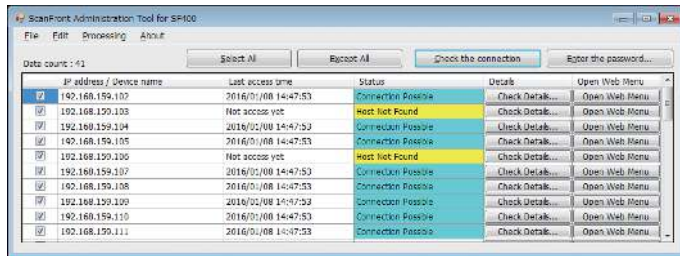
The ScanFront 400's Linux-based OS brings the power and flexibility to integrate with your document workflow. Create and send customised metadata index files with every scan, allowing for easy document classification into back office systems. System integrators can use the web app Software Development Kit to integrate their own customisations or design bespoke applications for the scanner.



ADVANCED SECURITY AND USER MANAGEMENT FEATURES

RAPID, RELIABLE SCANNING AND COMPACT DESIGN

ScanFront Administration Tool



Administration tool software allows you to manage multiple ScanFront scanners at a time. You can check the current status of the ScanFront scanners on the network, configure settings, manage users, back-up and restore configuration data.

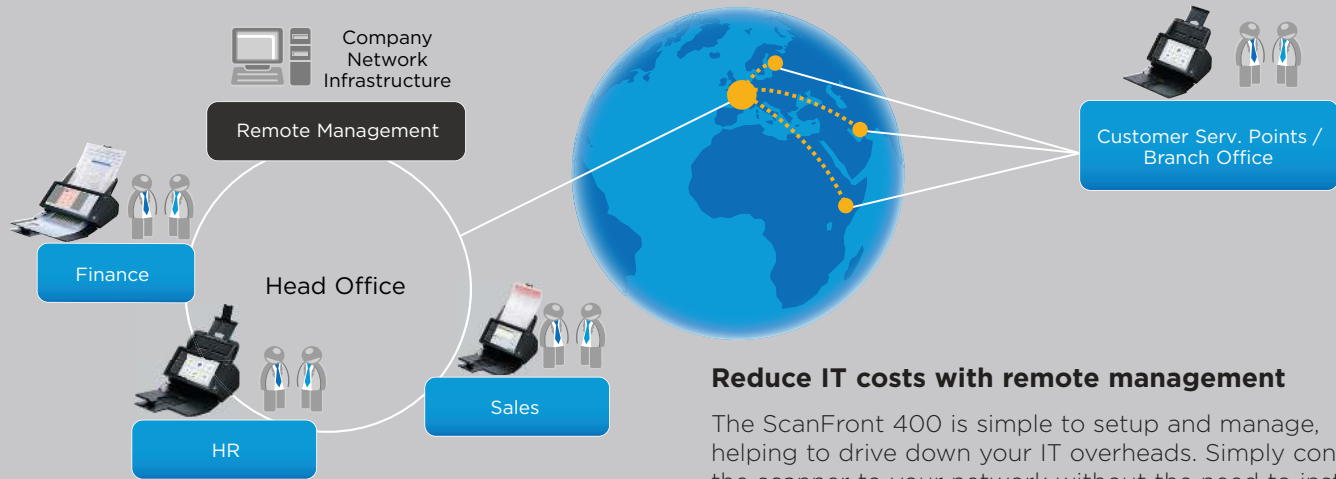
Secure operation



Security comes as standard: options include password log in, auto logout and request for address confirmation before sending. Frequent scan settings and destinations can be saved as job buttons and assigned to specific users, allowing simple and secure one-touch operation with fewer human errors. Administrators can remotely manage registered users and update firmware or software on multiple devices simultaneously – reducing IT costs.

- **Device security:** only authorised users can access the device, using ID and password authentication, which can be controlled using your active directory login or LDAP directory. An automatic logout gives additional protection against access to the device by unauthorised users
- **User security:** user permissions can be set individually, ensuring that users can only access the appropriate or necessary scanning options and features
- **Document security:** scanned documents, such as confidential files, can be sent with PDF encryption and password protection, so you can control access for viewing, editing and printing. Additionally, no copy of the scanned documents are stored on the device.





Reduce IT costs with remote management

The ScanFront 400 is simple to setup and manage, helping to drive down your IT overheads. Simply connect the scanner to your network without the need to install server software. It's easy to remotely update, backup and restore multiple devices through a simple web browser or perform simultaneous updates using the ScanFront Admin Tool.

ScanFront 400 Technical Specifications

GENERAL PRODUCT INFORMATION

| | |
|-----------------------------|---|
| Type | ADF Network Document Scanner |
| Scanning sensor unit | CMOS CIS 1 Line Sensor (x2) |
| Optical Resolution | 600 dpi |
| Light Source | RGB LED |
| Scanning side | Simplex / Duplex |
| Interface | LAN: 10Base-T / 100Base-TX / 1000Base-T (RJ-45 connector) 3x USB 2.0 (for USB Memory, Keyboard, Mouse, etc.) |
| Operation Panel | 10.1" (TFT-LCD Touch Panel (WSGVA 1024 x 600) |
| Paper separation | Retard Roller |
| Daily duty cycle | Approx. 6,000 scans/day |

SCANNING SPECIFICATIONS

| | |
|------------------------------|---|
| Black and White Speed | 45 ppm / 90 ipm |
| Colour Speed | 45 ppm / 90 ipm |
| Scanning resolution | 100 x 100 dpi / 150 x 150 dpi / 200 x 200 dpi / 300 x 300 dpi / 400 x 400 dpi / 600 x 600 dpi |
| Scanning modes | Black and White, Error Diffusion, Text Enhancement, 256-level Grayscale, 24-bit Colour, Auto Colour Detection |
| Scanning features | Ultrasonic double feed detection, Double feed retry / release, Deskew, Folio Mode, Long document scanning, Skip Blank Page, Automatic document orientation, Background smoothing, Bleed-through reduction, Remove shadow, Colour drop-out / enhancement |
| File output | TIFF, JPEG, PNG, PDF, PDF/A |

DOCUMENT SPECIFICATIONS

| | |
|------------------------|---|
| Paper | Width: 50 - 216 mm Length: 54 - 356 mm (3,048 mm in Long Document Mode) Thickness (separation ON): 27 - 209 g/m ² (0.04 - 0.25 mm) Thickness (separation OFF): 27 - 255 g/m ² (0.04 - 0.30 mm) |
| Business card | Size: 50 x 85 mm Thickness: up to 380g/m ² (0.35 mm) |
| Card | Size: 54 x 86 mm (ISO Standard) Thickness: 1.4 mm Horizontal feeding only, max. 10 cards or 1 embossed |
| Passport | Use optional passport carrier sheet Thickness: up to 6 mm (including carrier sheet) |
| Feeder capacity | 60 sheets (80 g/m ²) |

NETWORK FEATURES

| | |
|------------------------------|--|
| Scanning destinations | Scan to Shared Folder Scan to E-mail Scan to FTP Scan to FAX (via Internet fax service) Scan to Printer (FTP printing) Scan to USB Memory |
| Protocols | TCP/IP (IPv4), DNS, DHCP, SMB, NTP, HTTP, FTP, SFTP, Secure sending (FTPS and SMTPS), WebDAV, LDAPS |
| IP address | Obtained automatically (DHCP supported) or fixed |
| Directory support | Active Directory (NTLM authentication) OpenLDAP (simple authentication) |

SOFTWARE

| | |
|-----------------------|---|
| Software Tools | ScanFront Administration Tool Web Application Toolkit (SDK) ^[1] |
|-----------------------|---|

PHYSICAL FEATURES

| | |
|---------------------------------|---|
| Dimensions (WxDxH) | Trays closed: 305 x 282 x 230 mm Trays opened: 305 x 629 x 366 mm |
| Weight | Approx. 4.5 kg |
| Power requirements | AC100-240V (50/60Hz) |
| Power consumption | Scanning: 40W or less Sleep Mode: 2.0W or less Power Turned Off: 0.5W or less |
| Operating environment | Temperature: 10 - 32.5°C Humidity: 20 - 80% RH |
| Environmental compliance | RoHS and ENERGY STAR |

CONSUMABLES AND ACCESSORIES

| | |
|--------------------|---|
| Consumables | Exchange Roller Kit (feed roller and retard roller), Carrier Sheet (Passport), Carrier Sheet (A4) |
|--------------------|---|

Footnotes

^[1] Available through Canon Business Solutions Developer Programme - www.canon-europe.com/bsdip

All data is based on Canon standard testing methods except where indicated. Subject to change without notice.

Canon Electronics Inc
canon.com

Canon Europe
canon-europe.com

English Edition
© Canon Europa N.V., 2016

Canon Europe Ltd
3 The Square
Stockley Park
Uxbridge
Middlesex
UB11 1ET
United Kingdom

Canon